



Ho'omākaukau i kini lako wā 'ūlia pōpilikia

1 WAI

- Ho'okahi kālani wai o ka lā no nā kānaka pākahi i lawa pono no 14 mau lā no ka inu 'ana a me ka ho'oma'ema'e 'ana



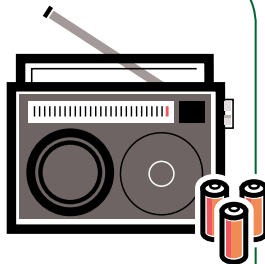
2 MEA'AI

- Nā mea'ai kini i hiki 'ole ho'i ke 'ino'ino no 14 mau lā no nā kānaka pākahi
- Waiū ehū no ka pēpē
- Mea 'oki kini no nā mea'ai



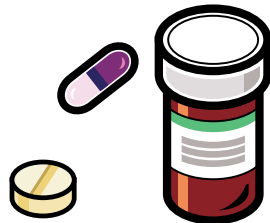
3 LĒKIŌ

- Kekahi lēkiō ho'ohana 'iho a i 'ole kekahi lēkiō me ka 'au wili hana uila no ka hō'a 'ana a me kekahi lēkiō wānana anilā NOAA me kekahi kani 'olea a me nā iho keu 'ē a'e no laua 'elua



4 NĀ LĀ'AU

- Nā lā'au kuhikuhi a me nā maka'aniani



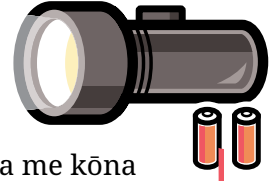
5 NĀ LOLE

- Kekahi mau pa'a lolo no ke kuapo 'ana e like me nā pala'ili lima lō'ihī, lolo wāwae lō'ihī, a me kekahi kāmā'a 'o'ole'a
- Kekahi kīhei 'eke moe a i 'ole he kīhei no nā kānaka pākahi



6 KUKUI PA'A LIMA

- Kekahi kukui pa'a lima a me kekahi mau iho keu
- 'Ūlili i mea e hō'ailona aku ai no ke kōkua
- Kekahi kelepona pa'alima me kōna mea ho'opiha iho, kekahi kini ho'ololi uila a i 'ole kekahi kini ho'opiha iho manehu lā



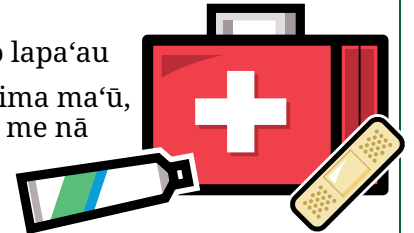
7 NĀ LAKO HO'OMA'EMA 'E KINO

- Nā lako pilina wahine a me nā lako ho'oma'ema'e kino pono'i
- Kaiapa



8 KINI LAKO LAPA'AU

- Kekahi kini lako lapa'au
- Kekahi kāwele lima ma'ū, nā 'eke 'ōpala, a me nā kaula 'ea no ka nāki'i 'ana i nā pono kūlana o ke ola



9 PEPA KĀLĀ

- Kekahi pepa kālā a i 'ole kekahi pila kīko'o mea huaka'i a me kekahi mau kenikeni



10 MEA'AI HOLOHOLONA HĀNAIAHUHU

- Nā mea'ai holoholona hānaiahuhu a me nā wai keu nā kau mau hānaiahuhu

