



# Fai se Pusa o Mea e Fa'aaogā i Fa'alavelave Fa'afuase'i

## 1 VAI

- E tasi le kalone vai a le tagata e to'atasi mo le 14 aso mo vaiinu ma fa'aaoga e fa'amamā ai



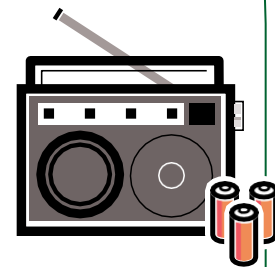
## 2 MEA'AI

- Mea'ai e le vave ona leaga mo le 14 aso o le susu pauta mo
- tagata ta'ito'atasi
- Tala'apa mo mea'ai



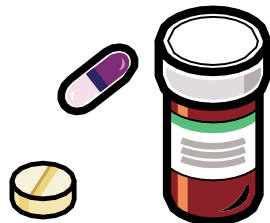
## 3 LEITIŌ

- Leitiō e ola i ma'a mōliuila po o leitiō e vili i le lima ona ola lea ma se Leitiō o le Tau o le NOAA fa'atasi ai ma se leo e tatagi fa'aילו ma ma'a mōliuila fa'aopopo mo mea ia e lua



## 4 FUĀLĀ'AU

- Fuālā'au mai Pepa Talavai ma mata tioata



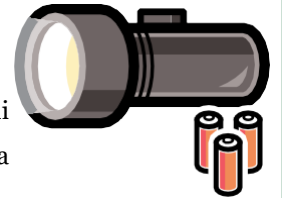
## 5 LAVALAVA

- Atoa uma lavalava e sui ai e aofia ai se 'ofutino lima 'u'umi, ofuvae 'u'umi, ma se'evae lelei
- Tagamoe po o se palanikeke mafanafana mo tagata ta'ito'atasi



## 6 MŌLIUILA

- Mōliuila ma ma'a fa'aopopo
- Fa'ili e fa'aילו ai mo fesoasoani
- Telefoni fe'avea'i fa'atasi ai ma le fagama'a, mea e ola ai le inverter po o lefafa I le la



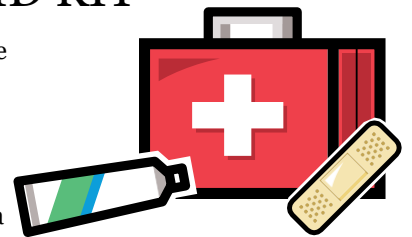
## 7 MEA E GA'AAOGĀ MO LE TŪMAMĀ

- Sapalai mo Tama'ita'i ma & mea e fa'aaogā e tagata ta'ito'atasi mo le tūmamā
- Napekini



## 8 FIRST AID KIT

- Fasi kosi susū o le First aid kit,
- taga lapisi, ma se nonoa pepa 'i'ila mo le fa'aaogā i tulaga o fale lē tā'ua mo le tagata lava ia



## 9 TINOITUPE

- Tinoitupe po o siaki malaga ma sui



## 10 MEA'AI A FAGAFAO

- Mea'ai a fagafao ma vai fa'aopopo mo lau fagafao

